

SPPUA 5262: Extracting Urban Space Diversity Metrics from the Boston Tax Assessor’s Dataset

Antonio Vazquez Brust

November 2015

Overview

These diversity metrics are indices derived from the Boston Tax Assessor’s dataset, in order to track the patterns of clustering and fragmentation of the city’s built environment.

The metrics are intended to complement measures of ethnic heterogeneity, as well as other demographic indicators, to assist in the analysis of urban segregation and unequal access and use of urban space.

Land Use Diversity Indices

The Tax Assessor’s dataset includes 17 different types of land use, including 6 different codes for residential use at varying densities (single floor houses, two-floor, etc). The many different classifications for similar uses can result in “artificially” high diversity scores in some cases, so a new auxiliary variable was created: SIMPLIFIED_LU. This variable reflects land use according to a simplified classification, with eight core uses: Residential, Commercial, Condo, Mixed Residential/Commercial, Agricultural, Industrial, Tax Exempt, and Tax Exempt by the Boston Redevelopment Authority (applies to parcels that are undergoing renovation projects).

To measure the diversity of land uses present in a given city area, a mathematical tool was borrowed from the field of ecology, where diversity is calculated as a function of the variety of species in a given environment. For this particular scenario, land use codes were considered different “species” in the urban environment, and its variety in a particular area was used to estimate its diversity index.

From a number of diversity algorithms with widespread use in ecology studies, Shannon’s algorithm was chosen, as it is well suited for environments where some of the species (in our case, land uses like “agricultural”) are rare. The Shannon index H can be calculated as:

$$H = - \sum_{p=1}^S p_i \log p_i$$

where p_i is the proportion of species i and S is the total number of species.

Land Use diversity indices were created by aggregating land use data at both the neighborhood level and the inner census tract level, to show nested diversity distributions:

Land use diversity Index (Neighborhood level)

Summary:

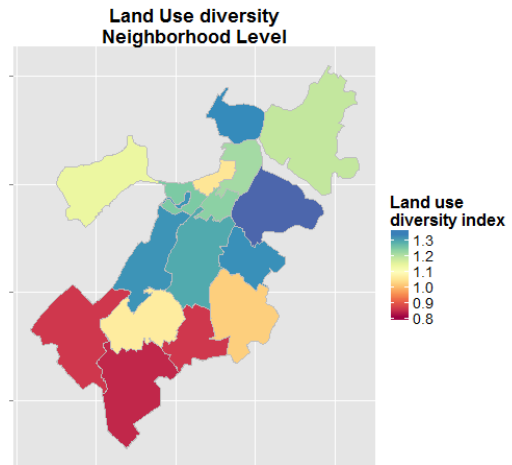
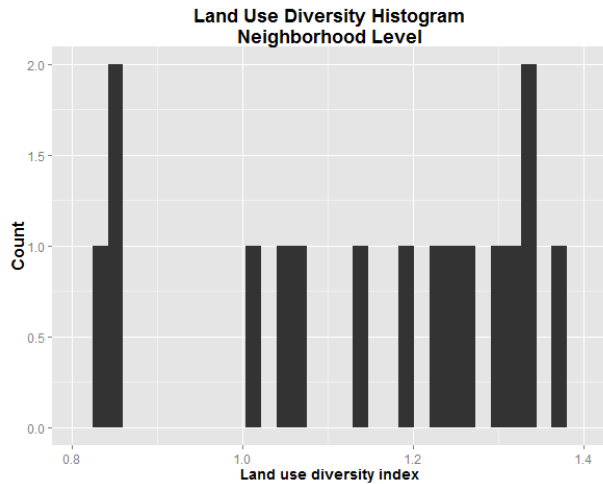
Minimum: 0.8385

1st Quartile: 1.0455

Median: 1.2105 Mean: 1.1522

3rd Quartile: 1.3097

Maximum: 1.3764

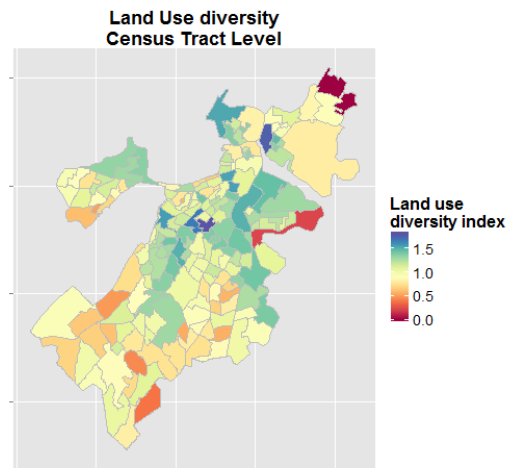
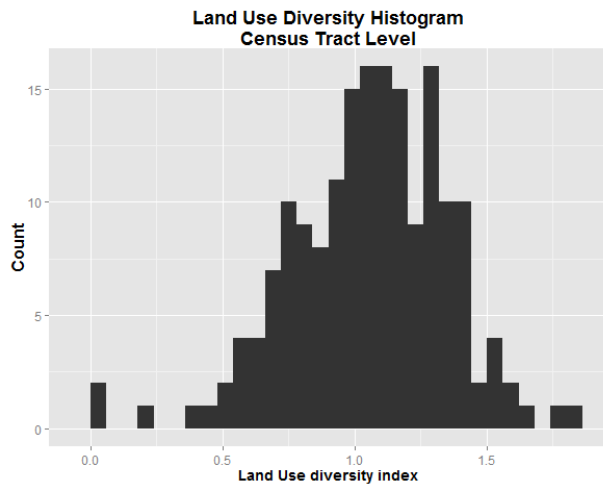


The neighborhood with the lowest land use diversity index is the very residential Hyde Park. The one with the highest value is South Boston, with its many industrial and commercial parcels.

Land use diversity index (Census tract level)

Summary:

Minimum: 0.0000
 1st Quartile: 0.8842
 Median: 1.0772
 Mean: 1.0542
 3rd Quartile: 1.2662
 Maximum: 1.8018



The individual Census tract with the lowest land use diversity index is the one at the city's north-east corner, where there are only two parcels, both commercial: the Suffolk Downs horse racetrack, and what I suspect is a small shop. The one with the highest index is located in Roxbury, right at the border with the South End.

Built Environment Assessed Value Dispersion Indices

This measure required the definition of two auxiliary variables at the record level:

- building assessed value per square feet
- building square feet value decile

By normalizing each building’s assessed value by its area, we enable the comparison between buildings of different sizes. By comparing this variable to classify buildings by decile, a “ranking” of building value was obtained.

The classification by decile (instead of a different method, like Jenks natural breaks or equal intervals) was preferred as it is not affected by outliers, which are present in our data.

The Building value dispersion index was obtained by applying the coefficient of dispersion D , defined as the ratio of the variance σ^2 to the mean μ :

$$D = \frac{\sigma^2}{\mu}$$

This formula was applied to the aggregation of building value rankings by city area. Measuring the dispersion of value rankings, instead of directly measuring square feet value, solves the problem of outliers skewing the dispersion index.

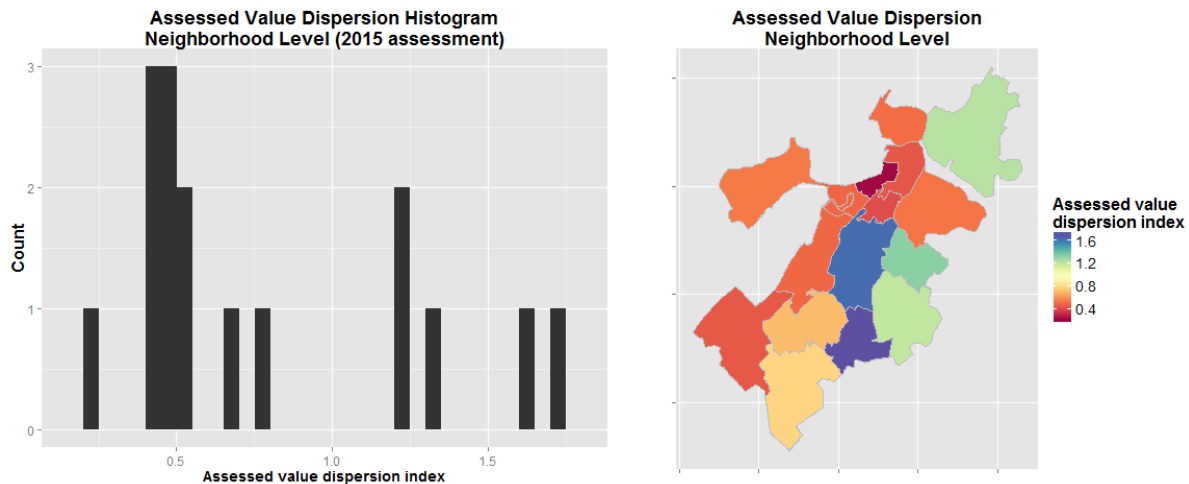
Initially, diversity in building value was measured using Shannon’s Diversity Index ($-\sum_{p=1}^S p_i \log p_i$) but this presented problems as ecological diversity indexes are better suited for categorical variables instead of continuous ones; -i.e., a census tract with buildings equally distributed in the 1st, 5th and 10th decile will produce the same diversity index value as a tract with buildings equally distributed in the 8th, 9th and 10th decile, which we understand to be less “diverse” than the former.

As with land use diversity, dispersion indices were created at both neighborhood and census tract level.

Assessed value dispersion index (Neighborhood level)

Summary:

Minimum: 0.2147
 1st Quartile: 0.4709
 Median: 0.5274
 Mean: 0.7890
 3rd Quartile: 1.2142
 Maximum: 1.7171

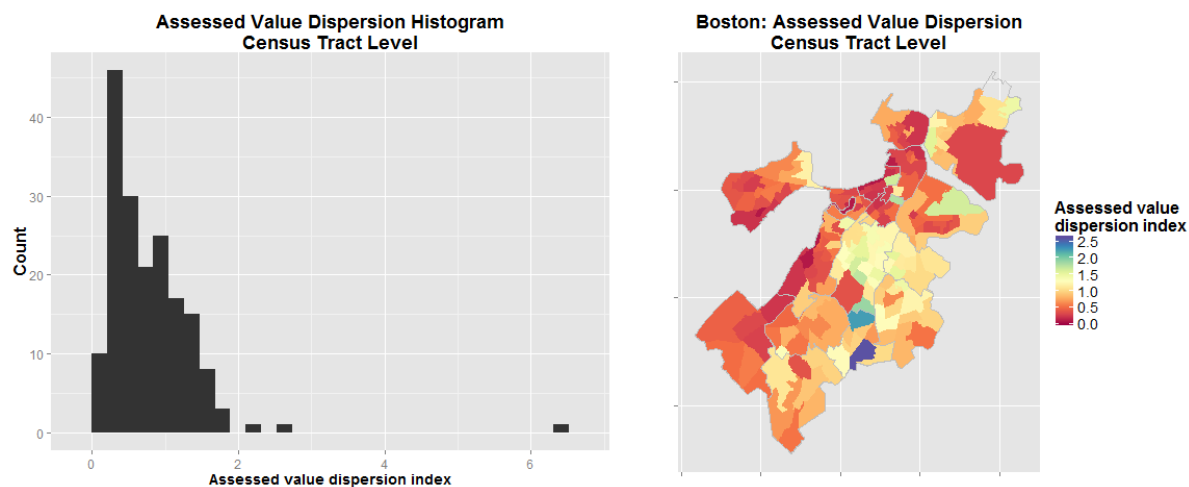


The neighborhood with the least amount of dispersion in its assessed value is, unsurprisingly, Back Bay/Beacon Hill. The neighborhoods with the highest difference between their highest and lowest assessed properties are Mattapan and Roxbury.

Assessed value dispersion index (Census tract level)

Summary:

Minimum: 0.09098
1st Quartile: 0.37028
Median: 0.63995
Mean: 0.78878
3rd Quartile: 1.07079
Maximum: 6.40000



The tract where property has the least range of valuations is the portion of Back Bay next to the river. The tract with the higher dispersion is a clear outlier, with an index of 6.4 (all other tracts go from 0.2 up to 2.6). This tract is the previously mentioned one where the Suffolk Downs racetrack (“live horse racing landmark since 1935”) and a small commercial structure represent the only parcels in the area, whose markedly different assessed values explain the resulting index.

Appendix: Annotated R Syntax

```
#load the Tax Assessor dataset
TAdat <- read.csv('Tax Assessor 2015 - Data.csv', stringsAsFactors = FALSE)

#Add a column with a 1 to 10 ranking (decile) for the parcel's sq foot value
library(dplyr)

TAdat <- mutate(TAdat,
  BLDG_RANK = ceiling(rank(AV_BLDG_PER_SF, na.last="keep") /
    length(which(!is.na(AV_BLDG_PER_SF))) * 10) )

# fix a single parcel in the entire dataset with LU = "XX",
```

```

#a land use code that is not registered in the datasat dictionary.
#Since the parcel is owned by a church, it's assumed a Tax Exempt parcel.

TAdat[TAdata$LU == 'XX',]$LU <- "E"

# Reduce land use categories

simplify_LU <- function(LU) {
  if (LU %in% c("R1", "R2", "R3", "R4", "RL", "A")) {
    return("RESIDENTIAL")
  } else if (LU %in% c("CM", "CP")) {
    return("CONDO")
  } else if (LU == "CD") {
    return("CONDO_UNIT")
  } else if (LU == "RC") {
    return("MIX_RC")
  } else if (LU %in% c("CC", "C", "CL")) {
    return("COMMERCIAL")
  } else if (LU == "AH") {
    return("AGRICULTURAL")
  } else if (LU == "I") {
    return("INDUSTRIAL")
  } else if (LU == "E") {
    return("TAX_EXEMPT")
  } else if (LU == "EA") {
    return("TAX_EXEMPT_BRA")
  } else {
    return(NA)
  }
}

#Create a new column by applying the simplifyLU function
TAdata <- transform(TAdata, SIMPLIFIED_LU = sapply(LU, simplify_LU))

# Calculate the land use diversity index
library(vegan)

nb.lu.index <- summarise(group_by(filter(TAdata, !is.na(BRA_PD)), BRA_PD),
  LAND_USE_DIV = diversity(table(SIMPLIFIED_LU)))

ct.lu.index <- summarise(group_by(filter(TAdata, !is.na(CT_ID_10)), CT_ID_10),
  LAND_USE_DIV = diversity(table(SIMPLIFIED_LU)))

#Create a built environment value dispersion index, by Census tract

ct.av.dispersion <- summarise(group_by(filter(TAdata, !is.na(CT_ID_10)), CT_ID_10),
  BUILT_ENV_DISP = var(BLDG_RANK, na.rm = TRUE)/
  mean(BLDG_RANK, na.rm = TRUE))

nb.av.dispersion <- summarise(group_by(filter(TAdata, !is.na(BRA_PD)), BRA_PD),
  BUILT_ENV_DISP = var(BLDG_RANK, na.rm = TRUE)/
  mean(BLDG_RANK, na.rm = TRUE))

```