

BOSTON DATA PORTAL



A HANDOUT ON THE BASICS

The Boston Data Portal consists of two main components: 1) BostonMap and 2) the Boston Data Library

BostonMap

ACCESSING BOSTONMAP

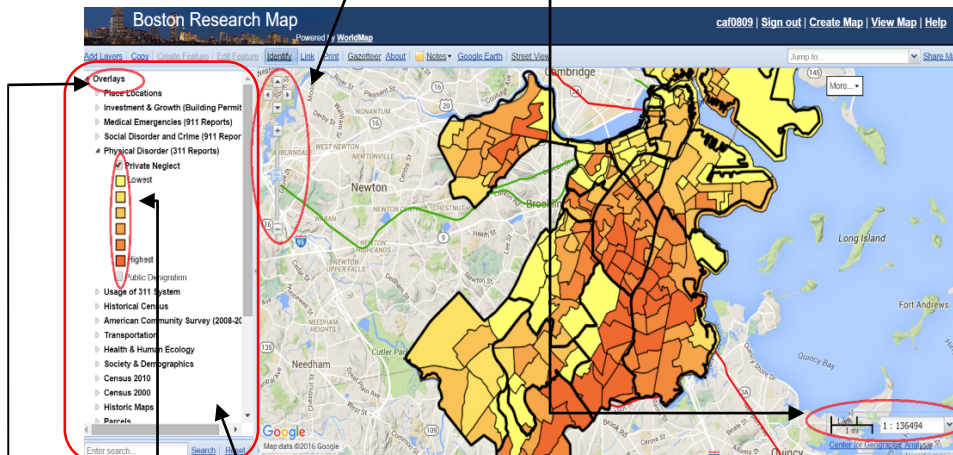
- 1) Go to <http://www.bostonarearesearchinitiative.net/Boston-Data-Portal.php>
- 2) Select "BostonMap"
(OR go to <http://worldmap.harvard.edu/boston/> OR go to <http://worldmap.harvard.edu/>, select "View A Map", select "Boston Research Map")

NAVIGATING WITHIN BOSTONMAP

The following tools allow you to move around the BostonMap, make viewing adjustments, and select various layers of data from the dashboard.

■ The Google Map

- Pan
- Zoom
- Scale



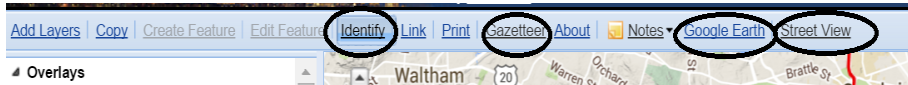
■ The Dashboard

- Scroll through overlays
- Legend
 - After you select an overlay the legend will show up

GUIDE TO THE TOOLBAR

Below are some of the tools that enable you to locate and gain information related to a specific point, including ways to access panoramic views and select variables of interest.

- Identify
 - This is enabled by default
 - Allows you to click on a feature on the map and access additional information
- Gazetteer
 - Search for a specific place or region area



- Street View
 - See what a location looks like as if you were physically there

- Google Earth

- Right click on a layer, a menu will show up with the following options:

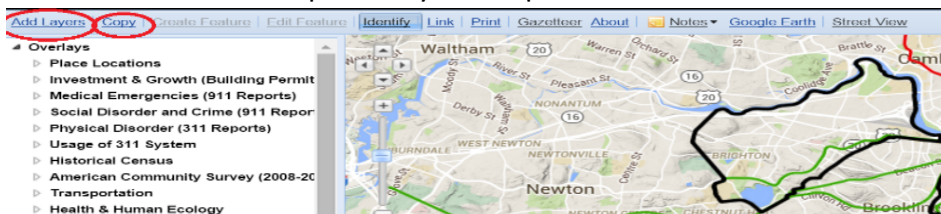
- Zoom-to-layer
- Remove layer
- Layer properties
- Share layer
 - Different ways to download (jpeg, shape file, etc.)
- Styles
 - For example, American community survey → racial and ethnic composition → can switch which race to view



MAKE YOUR OWN MAP

BostonMap allows you to create, customize, save, and share your own map using the following functions:

- Copy
 - WorldMap is designed to be a canvas where you can create, edit, save, and share your own map.
 - *Note: This also means that anyone can copy, create, and save their own maps to WorldMap
 - When you click on Copy it will ask you to...
 - Input a title and add a unique identifier to the url
 - Provide a description of your map



- Add Layers
 - After selecting “add layers” you will see the following tabs:
 - WorldMap Data
 - Includes all data that WorldMap users have uploaded.
 - Option to select “by area” to narrow your search
 - Enter information into search box
 - “+” will show you more information, including whether it has been certified.
 - Select the layer(s) you want, then click “add selected data”
 - External Data
 - Allows you to access other servers like Google
 - Upload Layer
 - You can add your own spatial data to share
 - Create Layer
 - This tools allows you to put points on a map to create your own layer without geocoding
 - Rectify Layer
 - Used with older maps that are in picture form and allows you to pin them



onto the map

- Save and share your map
 - Save
 - Print
 - Can adjust the view in the print page
 - Link
 - Creates a link of a specific visualization that you can then share with others easily
 - Share Map
 - Opens a new window with info related to the map including the layers it contains, certifications, and allows you to adjust management and permissions of your map (who can download it, edit it)
 - View Map
 - Can search all of WorldMap
 - User Name
 - To see your maps and information

The Boston Data Library (hosted by the Dataverse)

ACCESSING THE BOSTON DATA LIBRARY

- 1) Go to <http://www.bostonarearesearchinitiative.net/Boston-Data-Portal.php>
- 2) Select "The Boston Data Library" (OR go directly to <https://dataverse.harvard.edu/dataverse/BARI>)

WHAT IS IT?

- The Dataverse is a data repository intended to aid replication of scientific findings and assist with data sharing and dissemination
- Terminology to help understand how the Dataverse is organized
 - The Dataverse Network contains multiple dataverses (e.g., BARI's).
 - Additional dataverses can be nested within a dataverse.
 - Dataverses can also contain Datasets, which contain one or more files of the following types:
 - Documentation files
 - Data files (e.g., .csvs)
 - Shape files

NAVIGATING WITHIN THE DATAVERSE

The following steps provide guidance on how to find and access datasets within the Dataverse:

- Turn off Datasets.
- Open a Dataverse
 - Navigate to a data set.
 - Citation for professional use.
- Download easily
 - Asks you to sign the guestbook
 - May be able to explore if already mapped

The screenshot shows the Dataverse website interface. At the top, there is a navigation bar with the Dataverse logo, a search icon, and links for 'About', 'Guides', and 'Support'. Below the navigation bar, there is a message encouraging users to use the comments page to share knowledge and a contact email address: bari@radcliffe.harvard.edu. A search bar is present with the text 'Search this dataverse...' and a 'Find' button. Below the search bar, there are filters for 'Dataverses (7)', 'Datasets (39)', and 'Files (221)'. A 'Publication Status' section shows 'Unpublished (38)', 'Draft (33)', and 'Published (7)'. The search results section displays '1 to 10 of 46 Results' and shows a result for 'Commonwealth Connect Data 2009-2015' with a 'Draft' and 'Unpublished' status. The result includes a citation: 'O'Brien, Dan, 2016, "Commonwealth Connect Data 2009-2015", <http://dx.doi.org/10.7910/DVN/J60XW9>, Harvard Dataverse, V1.0'. A 'Placeholder' image is shown below the citation.